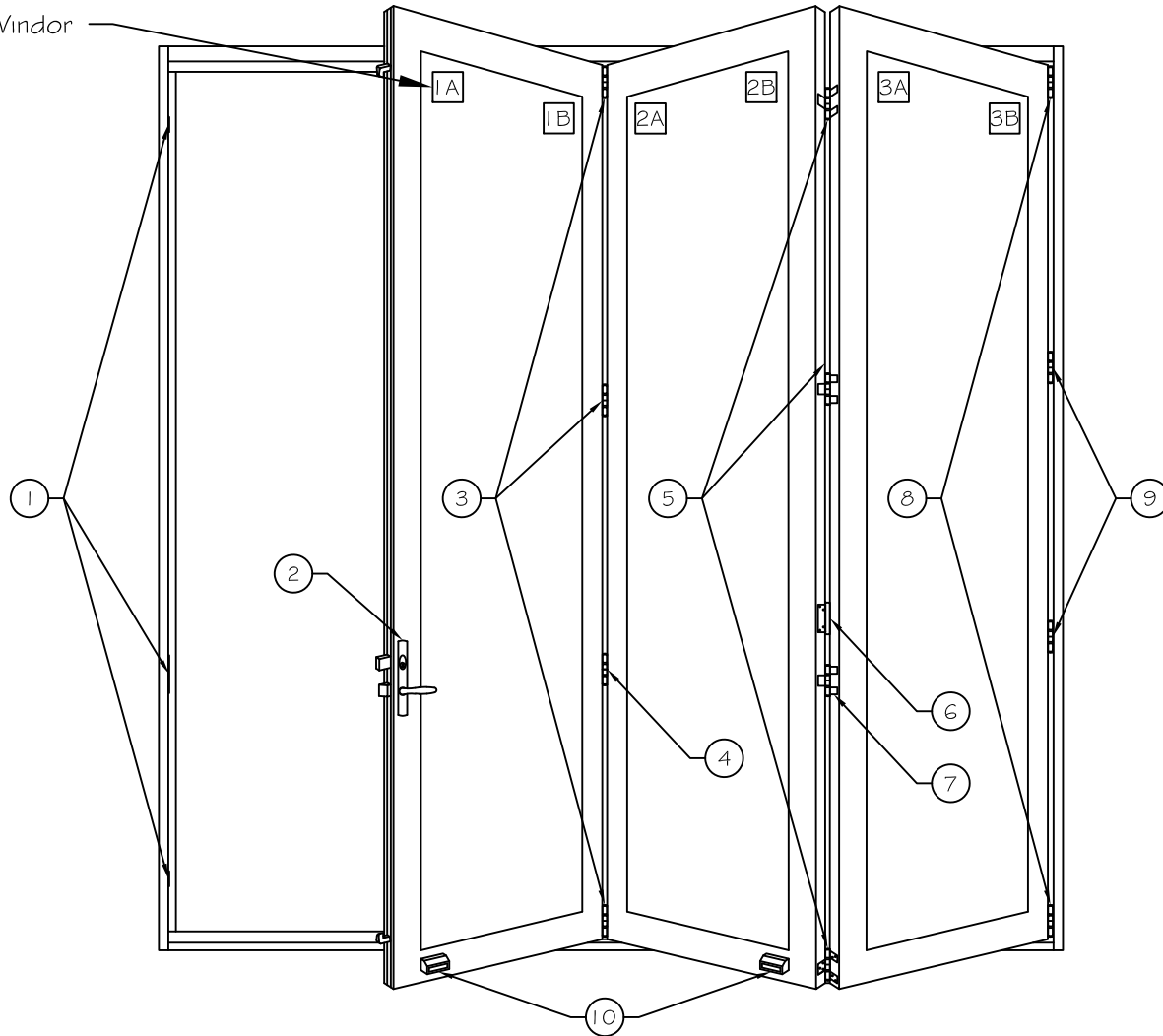


\*Panels labeled at Windor



\*Door as viewed from the exterior

Folding Door Parts

| Qty. | Description                               | Qty. | Description  |
|------|---|------|--|
| 1    | Keepers and plates                        | 7    | E3 HHNHS Offset Hinge No Handle  |
| 2    | Hardware Set                              | 8    | E3 CPS Pivot Set   |
| 3    | E3 CICS Intermediate Carrier Set          | 9    | E3 WPS Middle Wall Pivot (Second pivot used with doors over 100" Height) |
| 4    | E3 HHNS Flat Hinge No Handle              | 10   | Centor Magnets   |
| 5    | E3 HHNHSS Half Offset Hinge Set No Handle |      |  |
| 6    | E3 HOL Handle Only                        |      |  |

Project:

File name: 3750 Folding Door Parts - Doors 8'-9' Height

Date: 20200819

Notes:

Layout: 3.0.3

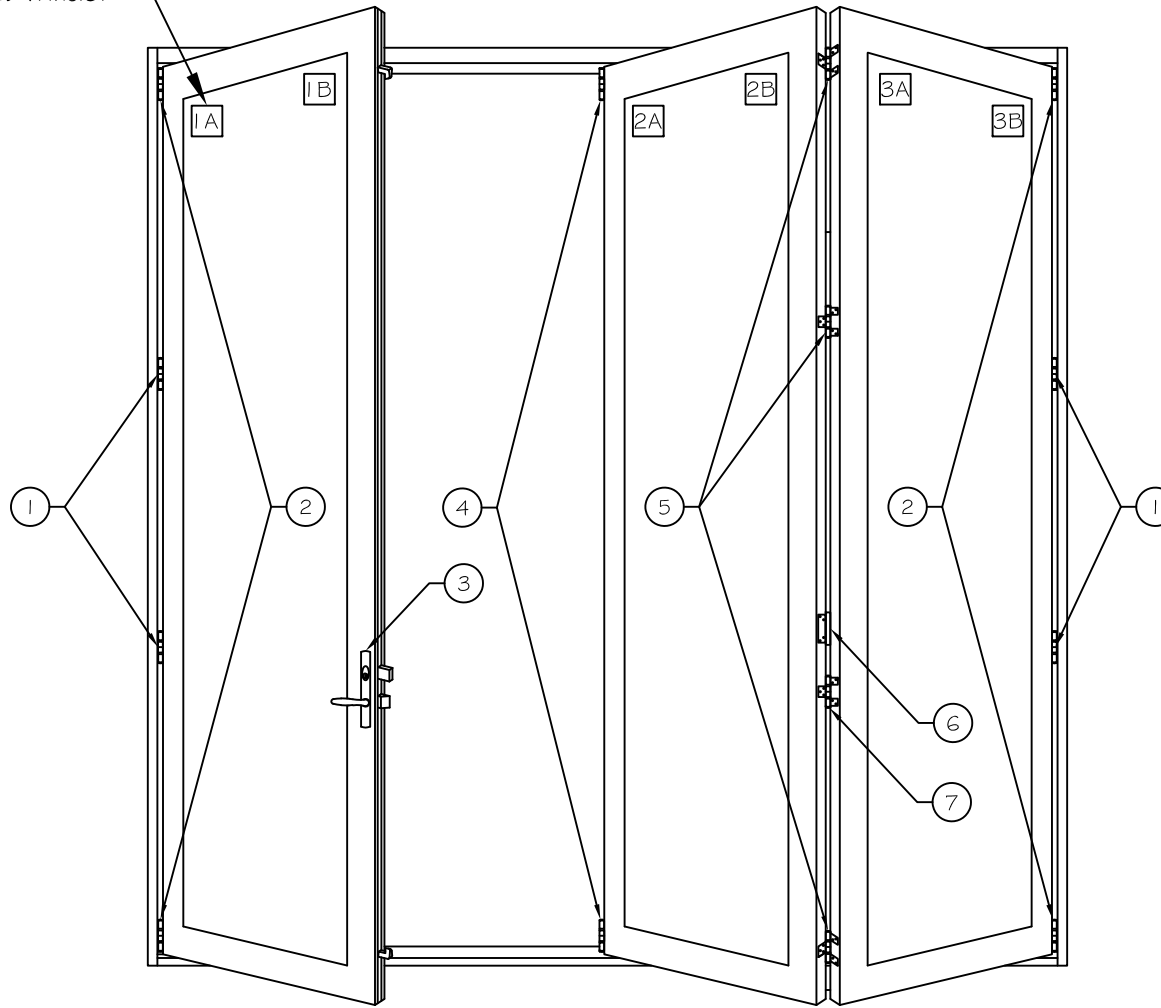
Drawn by: J Johnson

Notice: This document contains information proprietary to and is protected by copyright of Win-Dor Inc. and shall not be copied, disclosed to others, or used for any purpose other than that for which it is given, without the written permission of Win-Dor Inc.



450 Delta Ave  
Brea, Ca 92821  
(714) 385-1202

\*Panels labeled at Windor



\*Door as viewed from the exterior

Folding Door Parts

| Qty. | Description  | Qty. | Description                    |
|------|--|------|--------------------------------|
| 1    | 4 E3 WPS Middle Wall Pivot (Second pivot used with doors over 100" Height) | 7    | 1 E3 HNHS Flat Hinge No Handle |
| 2    | 2 E3 CPS Pivot Set   |      |                                |
| 3    | 1 Hardware Set   |      |                                |
| 4    | 1 E3 CLC Left hand Carrier Set   |      |                                |
| 5    | 1 E3 HNHS Flat Hinge Set No Handle   |      |                                |
| 6    | 1 E3 HOL Handle Only   |      |                                |

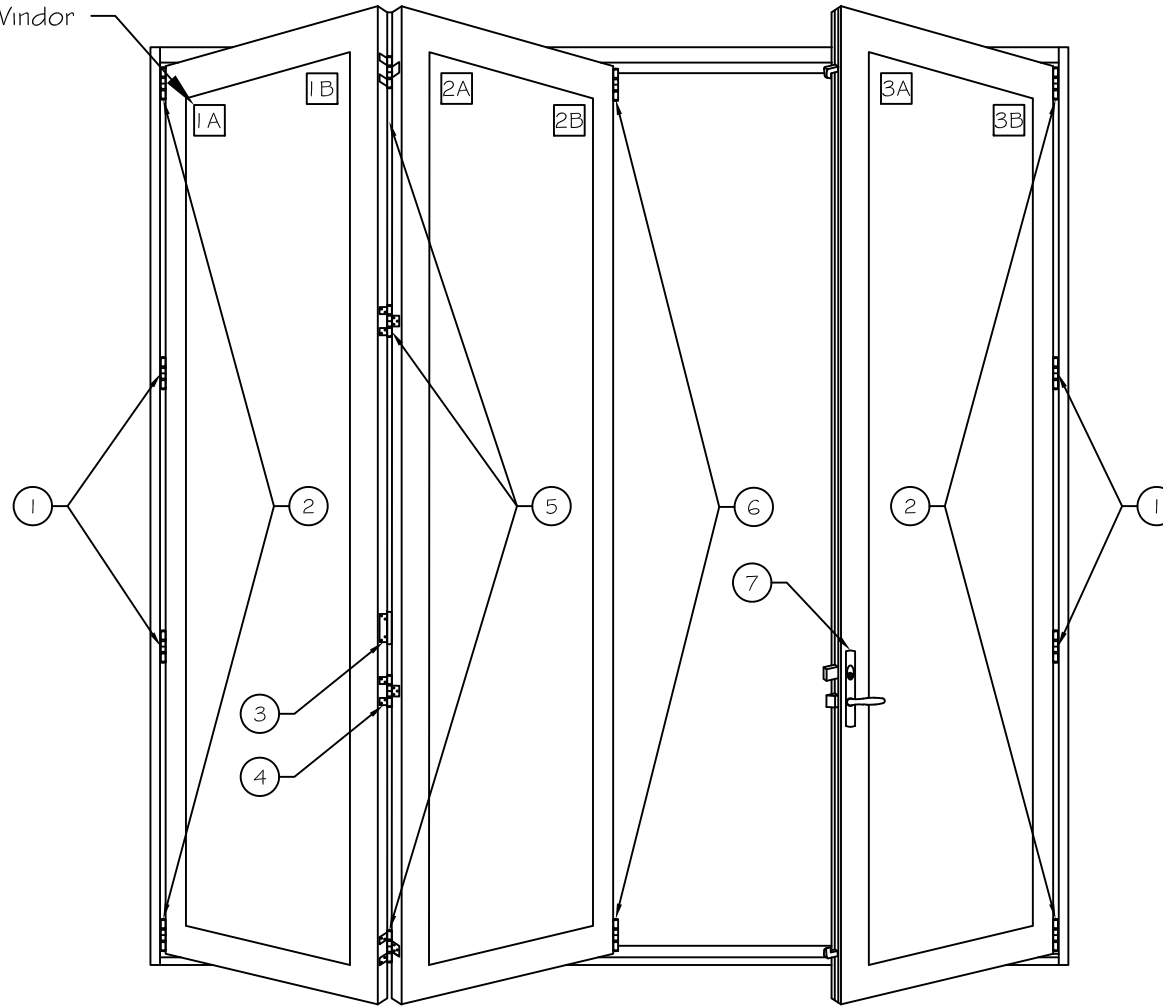
|          |   |                     |
|----------|---|---------------------|
| Project: | File name: 3750 Folding Door Parts - Doors 8'-9' Height | Date: 20200819      |
| Notes:   | Layout: 3.1.2   | Drawn by: J Johnson |

Notice: This document contains information proprietary to and is protected by copyright of Win-Dor Inc. and shall not be copied, disclosed to others, or used for any purpose other than that for which it is given, without the written permission of Win-Dor Inc.



450 Delta Ave  
Brea, Ca 92821  
(714) 385-1202

\*Panels labeled at Windor



\*Door as viewed from the exterior

Folding Door Parts

| Qty. | Description  | Qty. | Description    |
|------|--|------|----------------|
| 1    | 4 E3 WPS Middle Wall Pivot (Second pivot used with doors over 100" Height) | 7    | 1 Hardware Set |
| 2    | 2 E3 CPS Pivot Set   |      |                |
| 3    | 1 E3 HOL Handle Only   |      |                |
| 4    | 1 E3 HNHS Flat Hinge No Handle   |      |                |
| 5    | 1 E3 HNHS Flat Hinge Set No Handle   |      |                |
| 6    | 1 E3 CRC Right hand Carrier Set  |      |                |

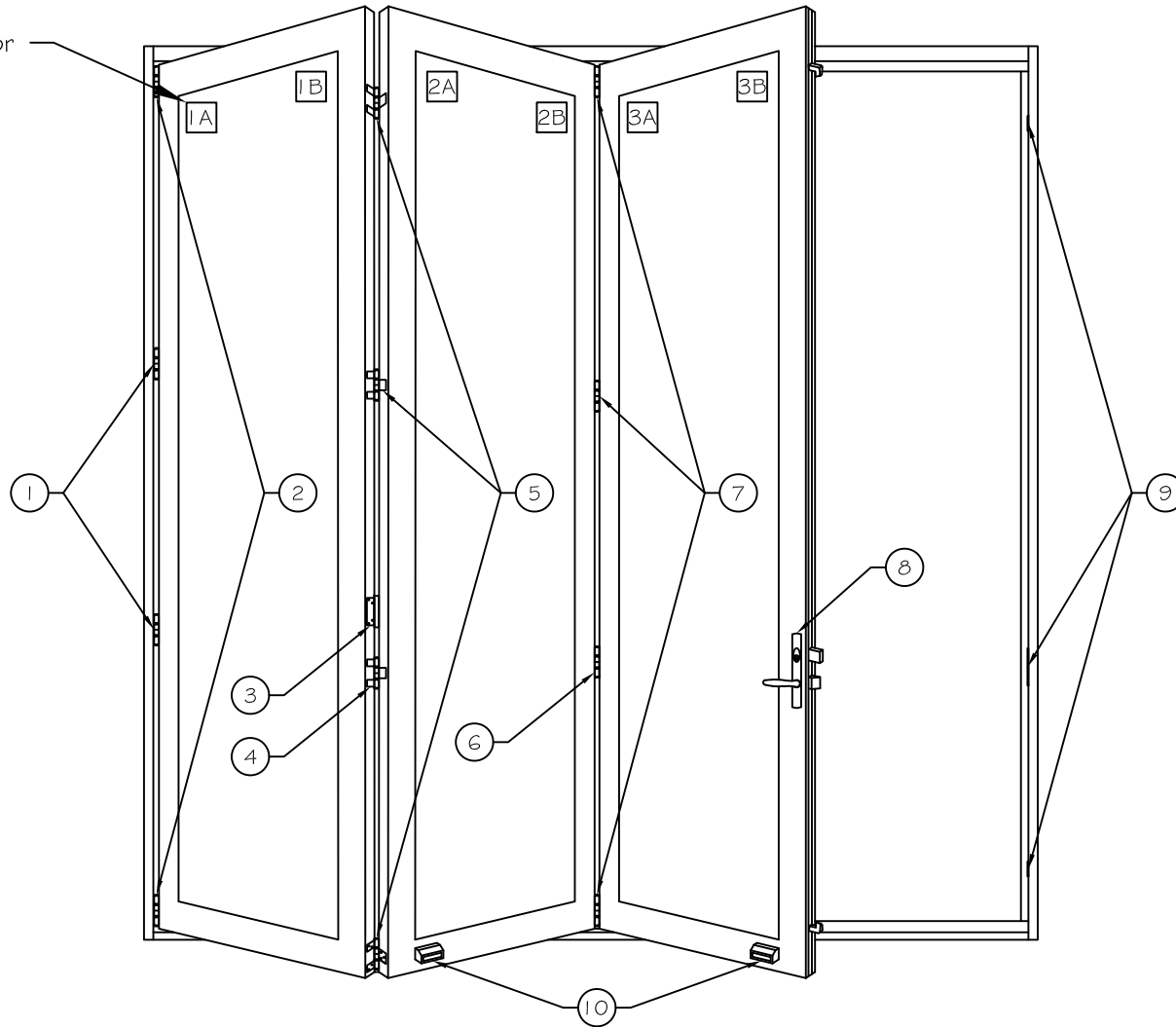
|          |   |                     |
|----------|---|---------------------|
| Project: | File name: 3750 Folding Door Parts - Doors 8'-9' Height | Date: 20200819      |
| Notes:   | Layout: 3.2.1   | Drawn by: J Johnson |

Notice: This document contains information proprietary to and is protected by copyright of Win-Dor Inc. and shall not be copied, disclosed to others, or used for any purpose other than that for which it is given, without the written permission of Win-Dor Inc.



450 Delta Ave  
Brea, Ca 92821  
(714) 385-1202

\*Panels labeled at Windor



\*Door as viewed from the exterior

Folding Door Parts

| Qty. | Description  | Qty. | Description                        |
|------|--|------|------------------------------------|
| 1    | 2 E3 WPS Middle Wall Pivot (Second pivot used with doors over 100" Height) | 7    | 1 E3 CICS Intermediate Carrier Set |
| 2    | 1 E3 CPS Pivot Set   | 8    | 1 Hardware Set                     |
| 3    | 1 E3 HOL Handle Only   | 9    | 1 Keepers and plates               |
| 4    | 1 E3 HHNHS Offset Hinge No Handle  | 10   | 1 Centor Magnets                   |
| 5    | 1 E3 HHNHSS Offset Hinge Set No Handle                                     |      |                                    |
| 6    | 1 E3 HNHS Flat Hinge No Handle   |      |                                    |

Project:

File name: 3750 Folding Door Parts - Doors 8'-9' Height

Date: 20200819

Notes:

Layout: 3.3.0

Drawn by: J Johnson

Notice: This document contains information proprietary to and is protected by copyright of Win-Dor Inc. and shall not be copied, disclosed to others, or used for any purpose other than that for which it is given, without the written permission of Win-Dor Inc.

**WINDOR**  
www.windorsystems.com

450 Delta Ave  
Brea, Ca 92821  
(714) 385-1202