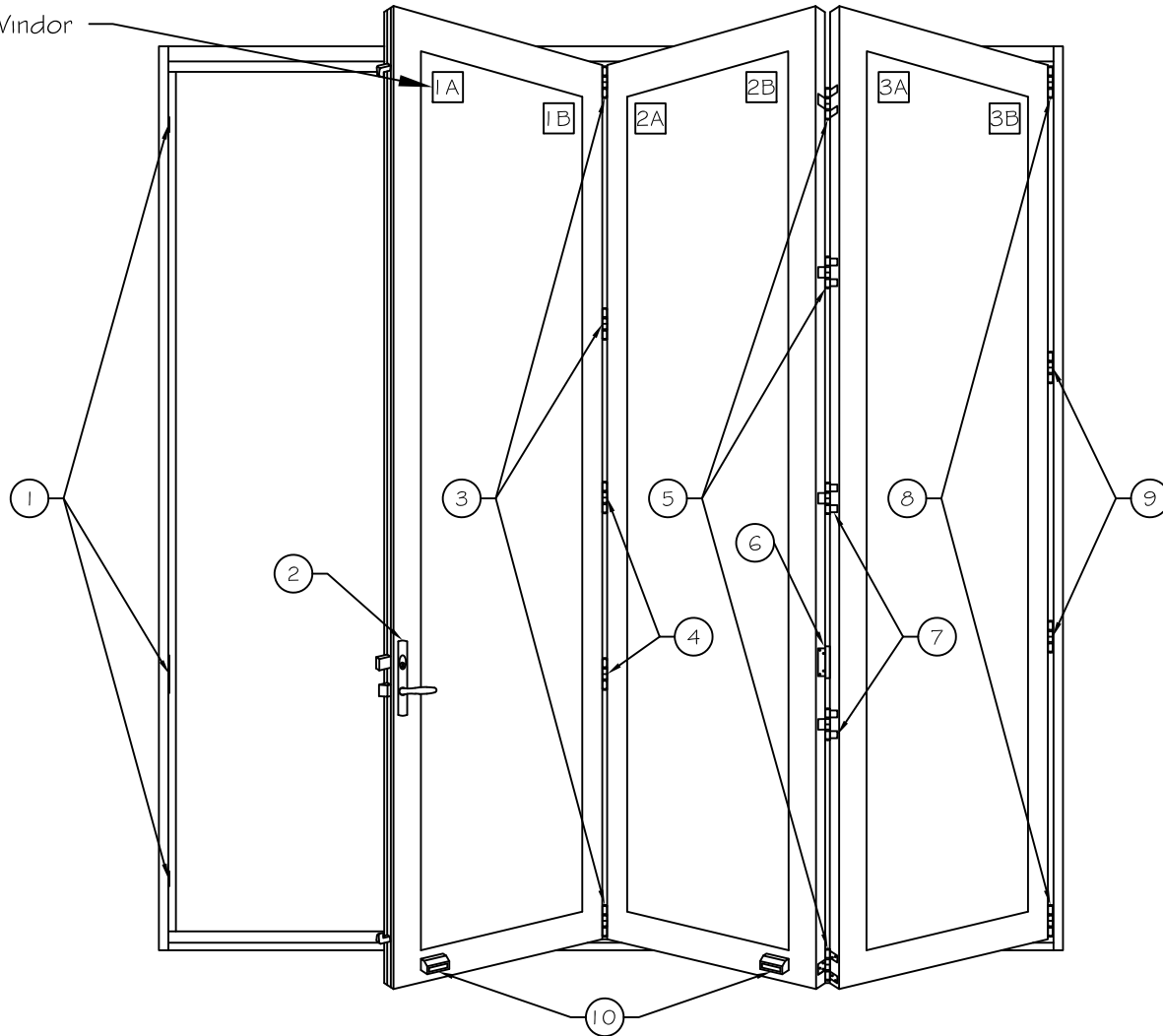


*Panels labeled at Windor



*Door as viewed from the exterior

Folding Door Parts

Qty.	Description	Qty.	Description
1	Keepers and plates	7	E3 HHNHS Offset Hinge No Handle
2	Hardware Set	8	E3 CPS Pivot Set
3	E3 CICS Intermediate Carrier Set	9	E3 WPS Middle Wall Pivot (Second pivot used with doors over 100" Height)
4	E3 HHNS Flat Hinge No Handle	10	Centor Magnets
5	E3 HHNHSS Half Offset Hinge Set No Handle		
6	E3 HOL Handle Only		

Project:

File name: 3750 Folding Door Parts - Doors 9'-10' Height

Date: 2020 | 207

Notes:

Layout: 3.0.3

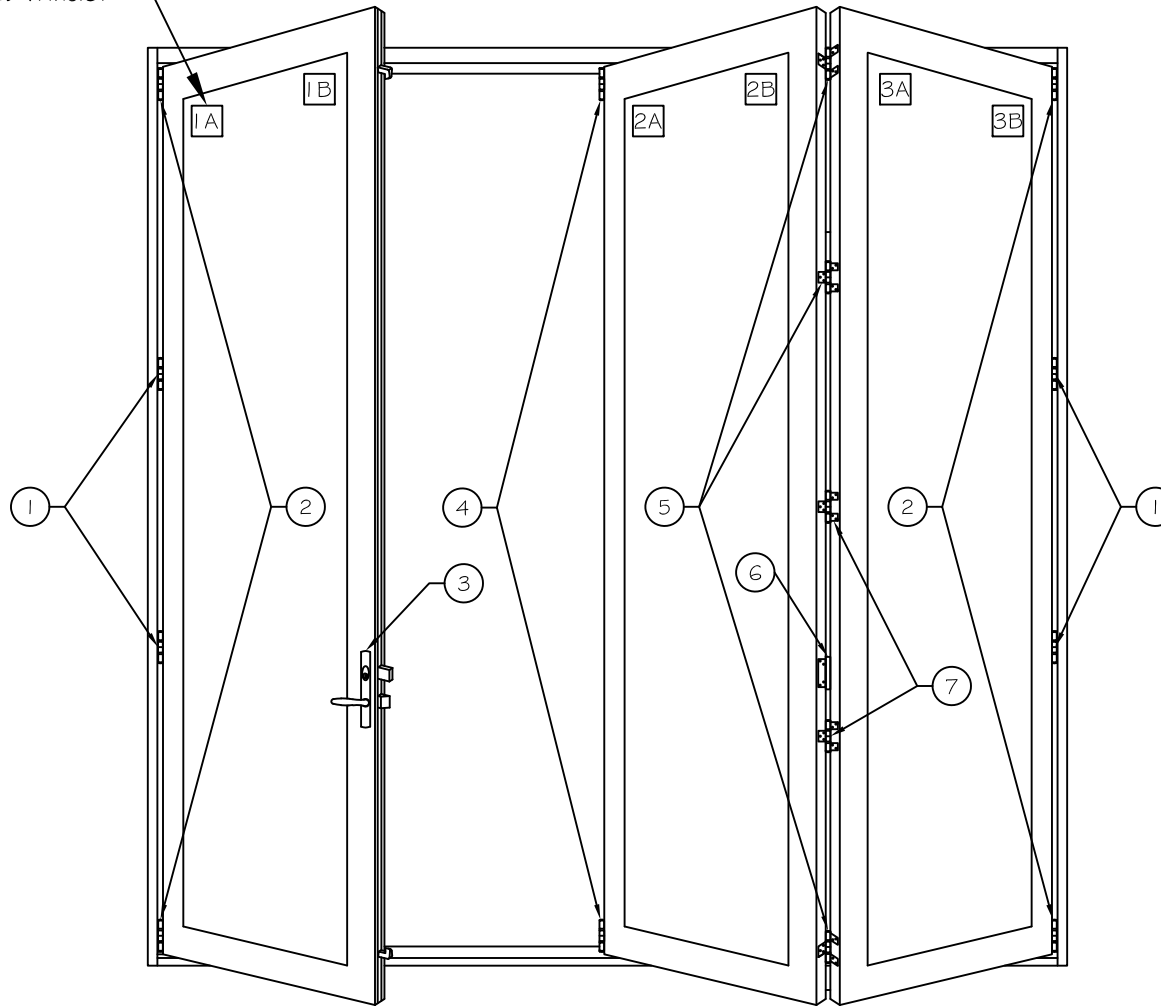
Drawn by: J Johnson

Notice: This document contains information proprietary to and is protected by copyright of Win-Dor Inc. and shall not be copied, disclosed to others, or used for any purpose other than that for which it is given, without the written permission of Win-Dor Inc.

WINDOR
www.windorsystems.com

450 Delta Ave
Brea, Ca 92821
(714) 385-1202

*Panels labeled at Windor



*Door as viewed from the exterior

Folding Door Parts

Qty.	Description	Qty.	Description
1	4 E3 WPS Middle Wall Pivot (Second pivot used with doors over 100" Height)	7	2 E3 HNHS Flat Hinge No Handle
2	2 E3 CPS Pivot Set		
3	1 Hardware Set		
4	1 E3 CLC Left hand Carrier Set		
5	1 E3 HNHS Flat Hinge Set No Handle		
6	1 E3 HOL Handle Only		

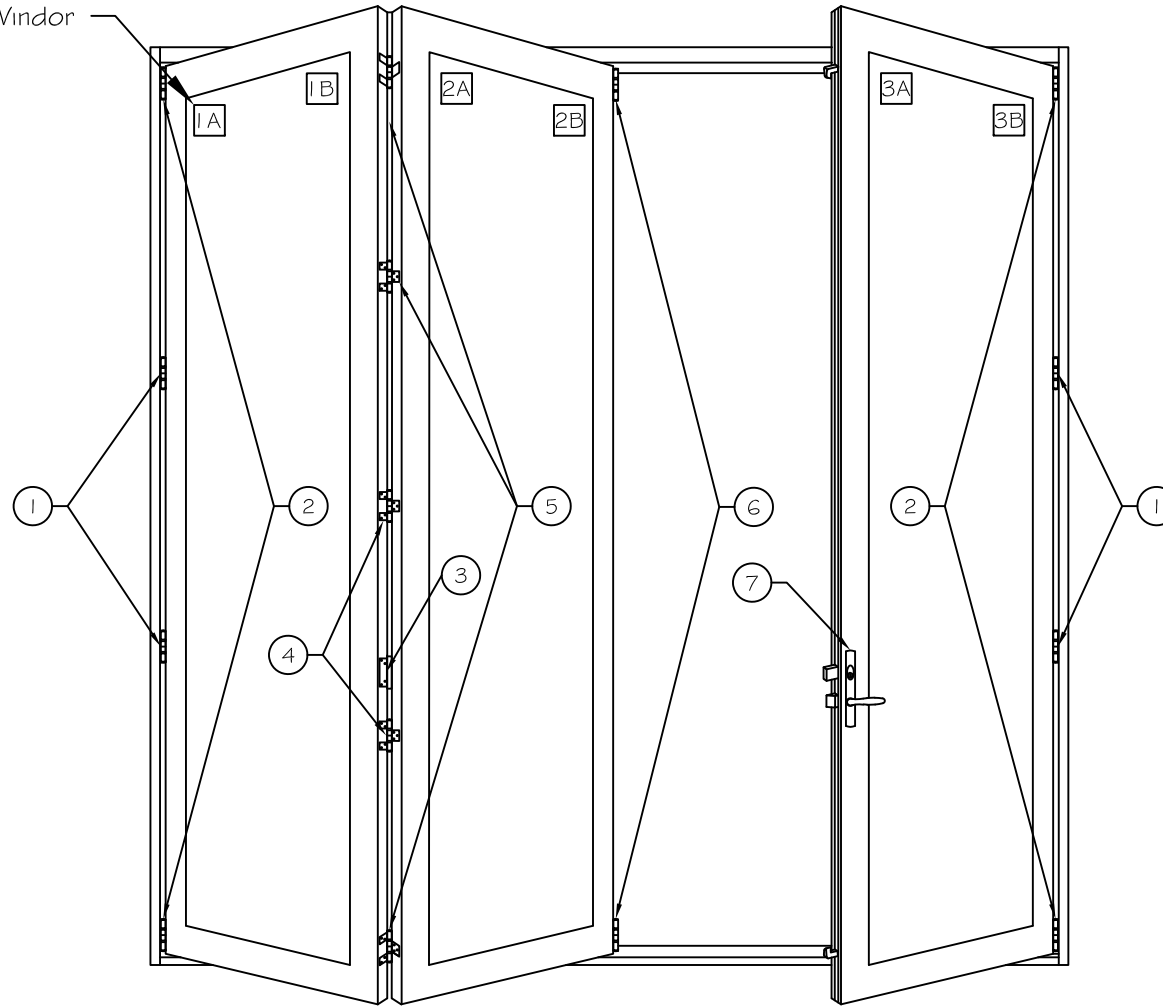
Project:	File name: 3750 Folding Door Parts - Doors 9'-10' Height	Date: 2020 207
Notes:	Layout: 3.1.2	Drawn by: J Johnson

Notice: This document contains information proprietary to and is protected by copyright of Win-Dor Inc. and shall not be copied, disclosed to others, or used for any purpose other than that for which it is given, without the written permission of Win-Dor Inc.



450 Delta Ave
Brea, Ca 92821
(714) 385-1202

*Panels labeled at Windor



*Door as viewed from the exterior

Folding Door Parts

Qty.	Description	Qty.	Description
1	4 E3 WPS Middle Wall Pivot (Second pivot used with doors over 100" Height)	7	1 Hardware Set
2	2 E3 CPS Pivot Set		
3	1 E3 HOL Handle Only		
4	2 E3 HNHS Flat Hinge No Handle		
5	1 E3 HNHS Flat Hinge Set No Handle		
6	1 E3 CRC Right hand Carrier Set		

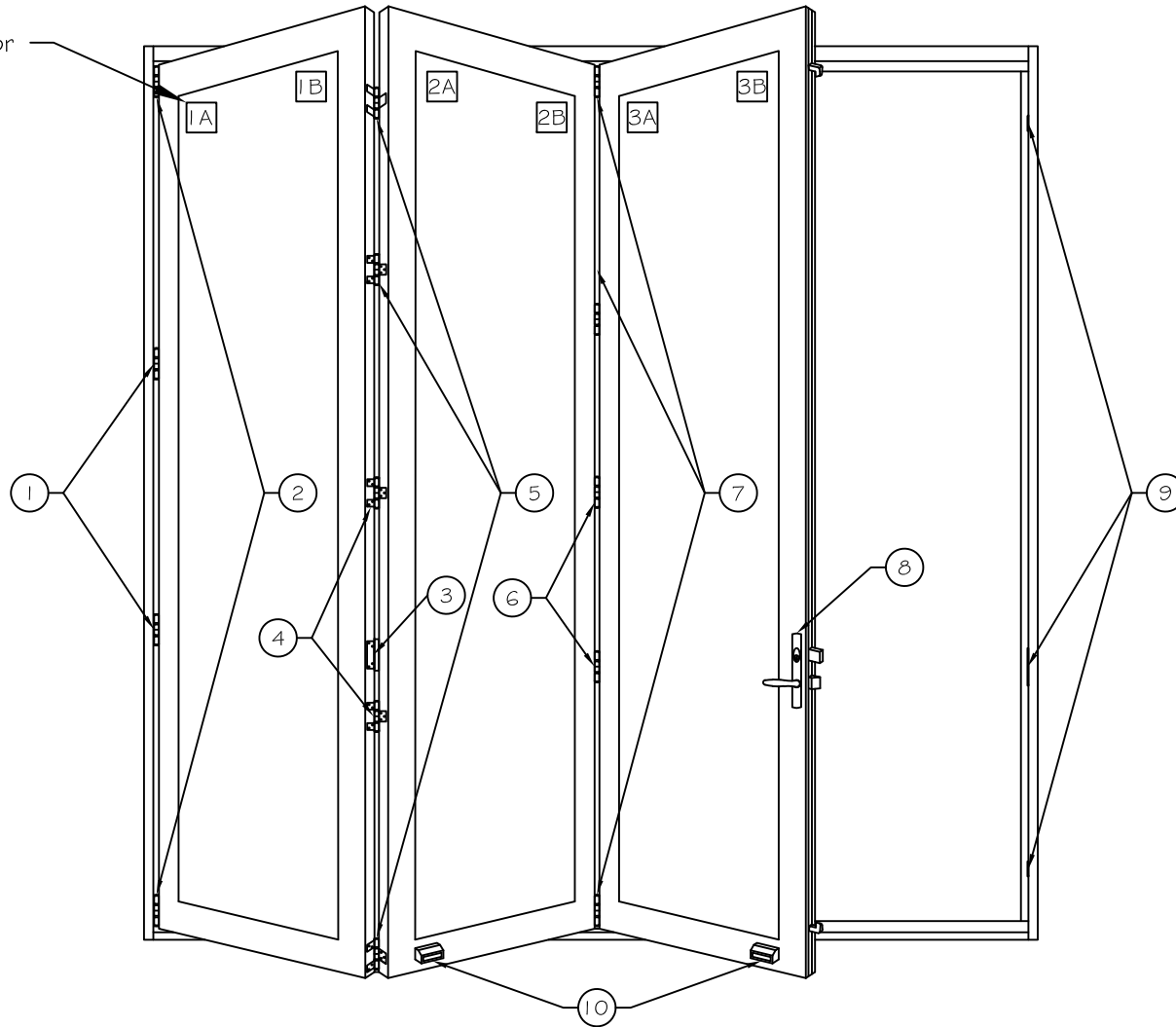
Project: File name: 3750 Folding Door Parts - Doors 9'-10' Height Date: 20201207
 Notes: Layout: 3.2.1 Drawn by: J Johnson

Notice: This document contains information proprietary to and is protected by copyright of Win-Dor Inc. and shall not be copied, disclosed to others, or used for any purpose other than that for which it is given, without the written permission of Win-Dor Inc.



450 Delta Ave
 Brea, Ca 92821
 (714) 385-1202

*Panels labeled at Windor



*Door as viewed from the exterior

Folding Door Parts

Qty.	Description	Qty.	Description
1	2 E3 WPS Middle Wall Pivot (Second pivot used with doors over 100" Height)	7	1 E3 CICS Intermediate Carrier Set
2	1 E3 CPS Pivot Set	8	1 Hardware Set
3	1 E3 HOL Handle Only	9	1 Keepers and plates
4	2 E3 HHNHS Offset Hinge No Handle	10	1 Centor Magnets
5	1 E3 HHNHSS Offset Hinge Set No Handle		
6	2 E3 HNHS Flat Hinge No Handle		

Project:	File name: 3750 Folding Door Parts - Doors 9'-10' Height	Date: 2020 207
Notes:	Layout: 3.3.0	Drawn by: J Johnson

Notice: This document contains information proprietary to and is protected by copyright of Win-Dor Inc. and shall not be copied, disclosed to others, or used for any purpose other than that for which it is given, without the written permission of Win-Dor Inc.



450 Delta Ave
Brea, Ca 92821
(714) 385-1202